



# GAT MONTHLY MEMBERSHIP PROGRESS REPORT

Results as of: 12/31/2022

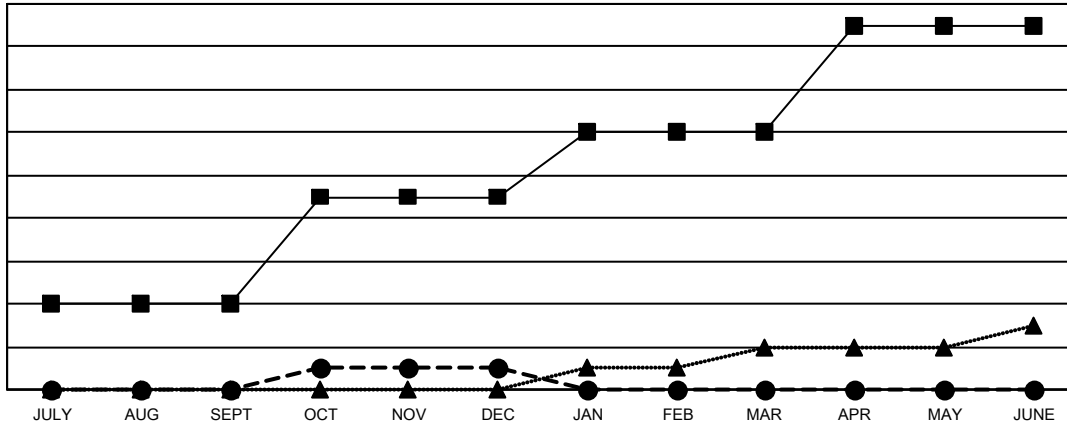
Multiple District 13

LOCATION: OHIO

Clubs			
RESULTS FOR 2022-2023			
QUARTER	NEW CLUB GOAL	NEW CLUBS	DROPPED CLUBS
JULY/AUG/SEPT	4	0	2
OCT/NOV/DEC	5	1	0
JAN/FEB/MAR	3	0	0
APR/MAY/JUNE	5	0	0

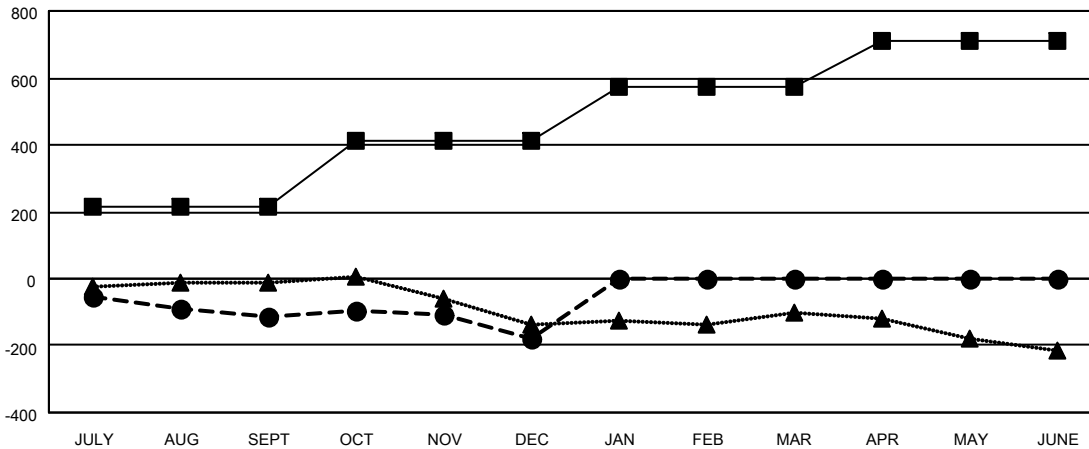
Members			
RESULTS FOR 2022-2023			
QUARTER	MEMBER GROWTH NET GOAL	MEMBER GROWTH ACTUAL	DROPPED MEMBERS ACTUAL (including transfers)
JULY/AUG/SEPT	215	141	240
OCT/NOV/DEC	196	242	293
JAN/FEB/MAR	160	0	0
APR/MAY/JUNE	142	0	0

GOALS AND ACTUAL NEW CLUBS CUMULATIVE



- - CURRENT YEAR GOALS FOR NEW CLUBS
- - CURRENT YEAR ACTUAL NEW CLUBS
- ▲ - LAST YEAR ACTUAL NEW CLUBS

GOALS AND ACTUAL MEMBERS CUMULATIVE



- - MEMBER GROWTH NET GOAL
- - MEMBER GROWTH ACTUAL
- ▲ - LAST YEAR MEMBERSHIP ACTUAL

<b>DROPPED CLUBS: 2</b>	<b>134 CLUBS OF 368 ADDED 1 OR MORE NEW MEMBERS</b>	<b>GENDER DISTRIBUTION</b>
<b>DROPPED MEMBERS</b>	<a href="#">CLICK HERE FOR CUMULATIVE MEMBERSHIP DATA</a>	MALE 6,769 (68.45%)
DECEASED 90		FEMALE 3,105 (31.40%)
CLUB CANCELLED 0		NON BINARY 0 (0.00%)
OTHER 444		PREFER NOT TO ANSWER 15 (0.15%)
<b>TOTAL 534</b>		<b>TOTAL FAMILY UNIT MEMBERS 2,072</b>
		<b>FAMILY MEMBERS PAYING HALF DUES 1,054</b>